



## Revelstoke Hampton Avenue

St Marychurch, Torquay

**£389,950** FREEHOLD

- RECEPTION HALL
- SITTING ROOM
- LOUNGE
- DINING ROOM
- KITCHEN/BREAKFAST ROOM
- UTILITY
- FOUR BEDROOMS
- EN-SUITE & BALCONY
- FAMILY BATHROOM
- GARDEN
- GARAGE & DRIVEWAY PARKING
- CHAIN FREE

AVAILABLE SOON. Set in the very heart of St Marychurch, Revelstoke is a CHARACTER SEMI-DETACHED HOUSE enviably positioned just a short, level stroll from the scenic Babbacombe Downs and the thriving village precinct. Constructed circa 1930, the property is currently undergoing a comprehensive renovation program to revert from two apartments back to its origins as a fine family home. The extensive living space is typical of its era affording generous room dimensions including a guest bedroom suite complete with balcony.

A comprehensive range of amenities are close at hand including shops, banking facilities, medical centres and bus services whilst the picturesque beaches of Babbacombe and Oddicombe can be found within close proximity with the renowned Cliff Railway taking passengers down the wooded slopes in the warmer months. Torquay's Golf Club is also just a tee shot away on nearby Petitor Road.

---

Hampton Avenue, Torquay, TQ1 3LA,

---



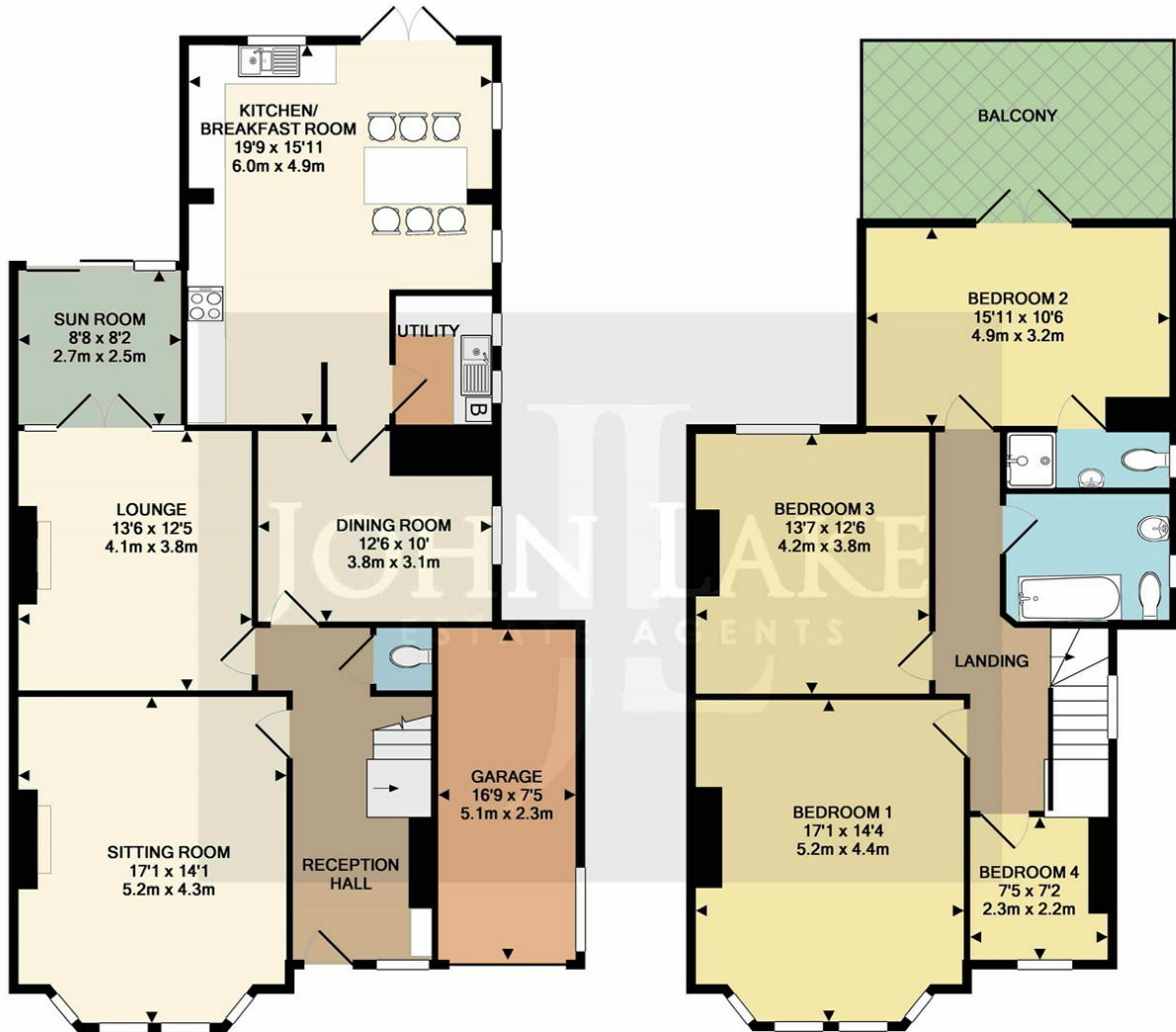
The Old Town Hall  
Manor Road  
St Marychurch,  
Torquay TQ1 3JS

## SALES

01803 328899  
property@johnlake.co.uk

## LETTINGS

01803 328811  
office@johnlakelettings.co.uk



**IMPORTANT** John Lake would inform prospective purchasers that these sales particulars have been prepared as a general guide only. A detailed survey has not been carried out, nor the services, appliances and fittings tested. Room sizes should not be relied upon for furnishing purposes and are approximate. If floor plans are included, they are for guidance only and illustration purposes only and may not be to scale. If there are any important matters likely to affect your decision to buy, please contact us before viewing the property.

