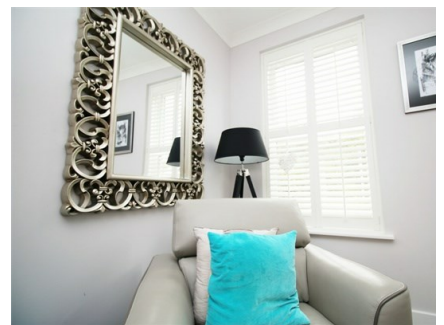


THE PROPERTY

EXPLORER

www.thepropertyexplorer.co.uk



63 Amport Road, Sherfield-on-Loddon, Hook, Hampshire RG27 0FR

Guide Price £1,950 pcm

- 5 Bedrooms
- 4 bathrooms
- Luxury kitchen dining room
- Large lounge
- Three floors
- Gas Central heating
- UpVC windows
- Window shutters
- PREMIER LOCATION
- Garage and Parking

17, Church Street, Basingstoke, Hampshire, RG21 7QG

Tel: 0800 7723277

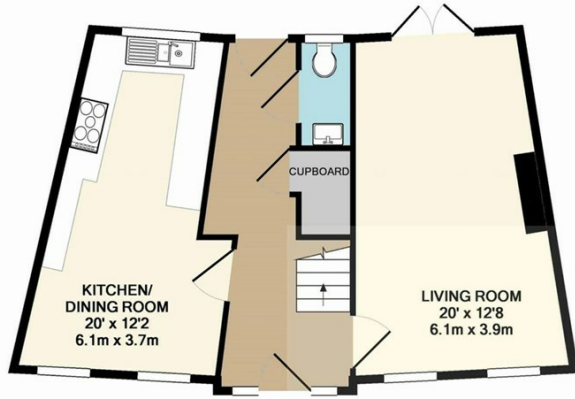
Email: hello@thepropertyexplorer.co.uk

Web: www.thepropertyexplorer.co.uk

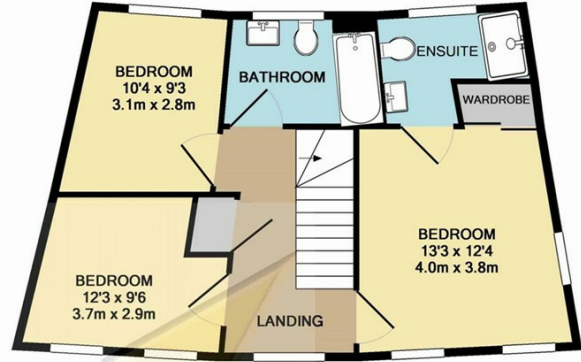
63 Amport Road, Sherfield-on-Loddon, Hook, Hampshire RG27 0F

Guide Price <sup>R</sup>£1,950 pcm

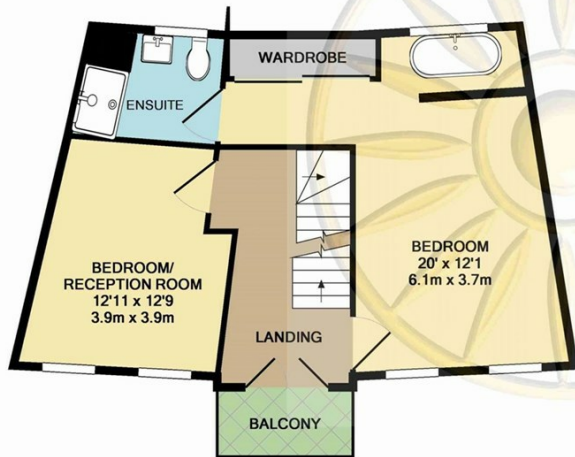
STUNNING HOUSE! Offered in showroom condition with attractive views. This five bedroom executive family home simply must be viewed internally to fully appreciate the luxury accommodation, fixtures and design features. Flexible accommodation arranged over three floors with luxury kitchen dining room, Boutique master bedroom with dressing room, free standing bath area and en-suite. Three further bathrooms and guest suite with en-suite, recently landscaped rear garden and garage with parking. PETS CONSIDERED, NO SMOKERS OR BENIFITS. AVAILABLE DECEM



GROUND FLOOR  
APPROX. FLOOR  
AREA 543 SQ.FT.  
(50.5 SQ.M.)



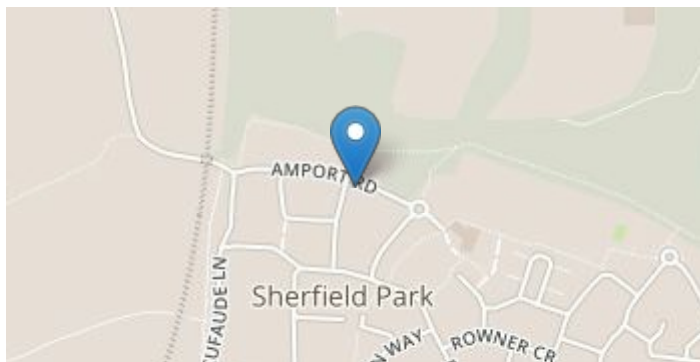
2ND FLOOR  
APPROX. FLOOR  
AREA 541 SQ.FT.  
(50.3 SQ.M.)



1ST FLOOR  
APPROX. FLOOR  
AREA 548 SQ.FT.  
(50.9 SQ.M.)

TOTAL APPROX. FLOOR AREA 1633 SQ.FT. (151.7 SQ.M.)

Whilst every attempt has been made to ensure the accuracy of the floor plan contained here, measurements of doors, windows, rooms and any other items are approximate and no responsibility is taken for any error, omission, or mis-statement. This plan is for illustrative purposes only and should be used as such by any prospective purchaser. The services, systems and appliances shown have not been tested and no guarantee as to their operability or efficiency can be given  
Made with Metropix ©2016



See all our properties on...

